



Legende


-  neue Tempo-30-Zone
-  Geschwindigkeitsmessung

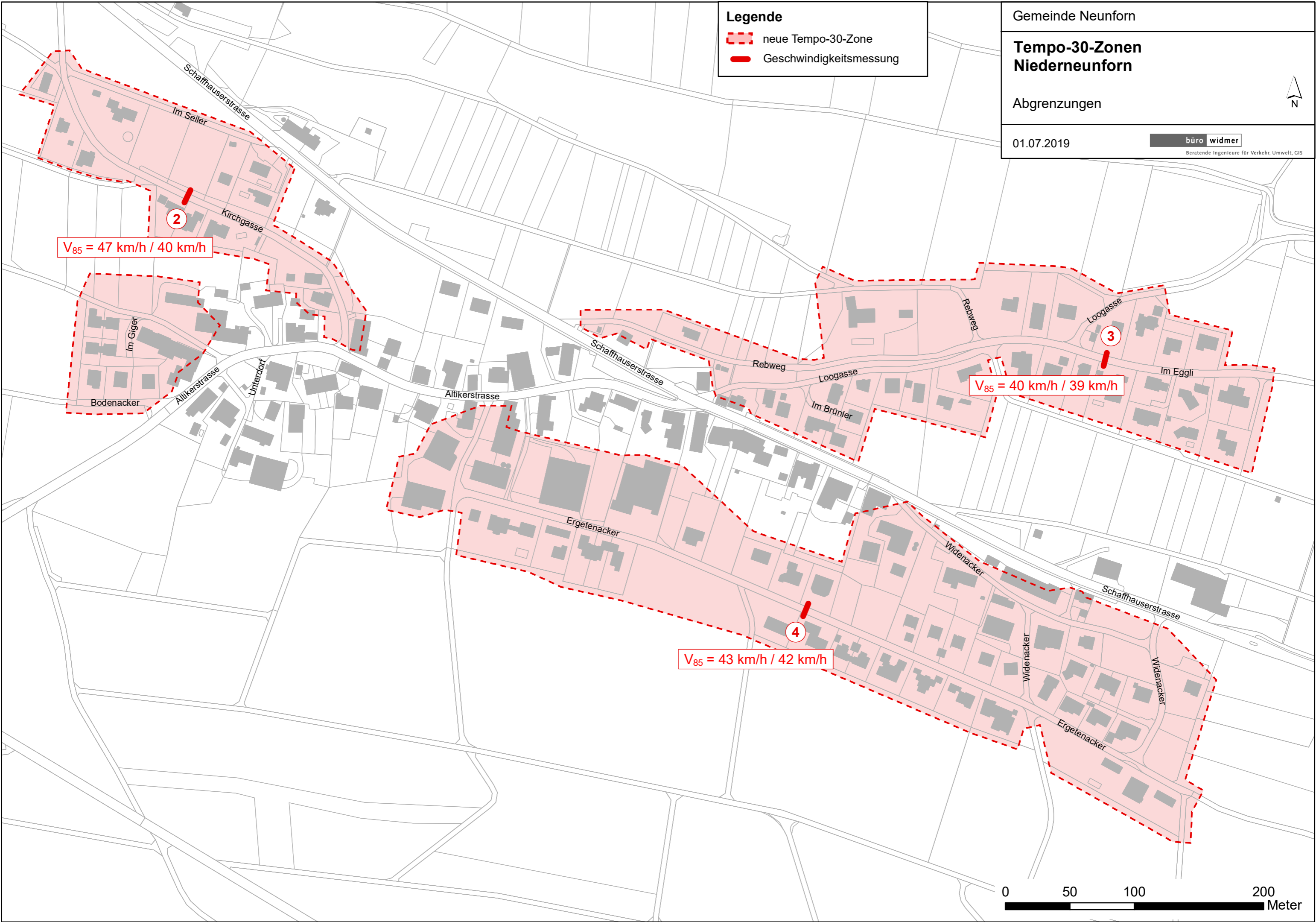
Gemeinde Neunforn

**Tempo-30-Zonen
Niederneunforn**

Abgrenzungen

01.07.2019

 **büro widmer**
Beratende Ingenieure für Verkehr, Umwelt, GIS



V₈₅ = 47 km/h / 40 km/h

V₈₅ = 40 km/h / 39 km/h

V₈₅ = 43 km/h / 42 km/h

